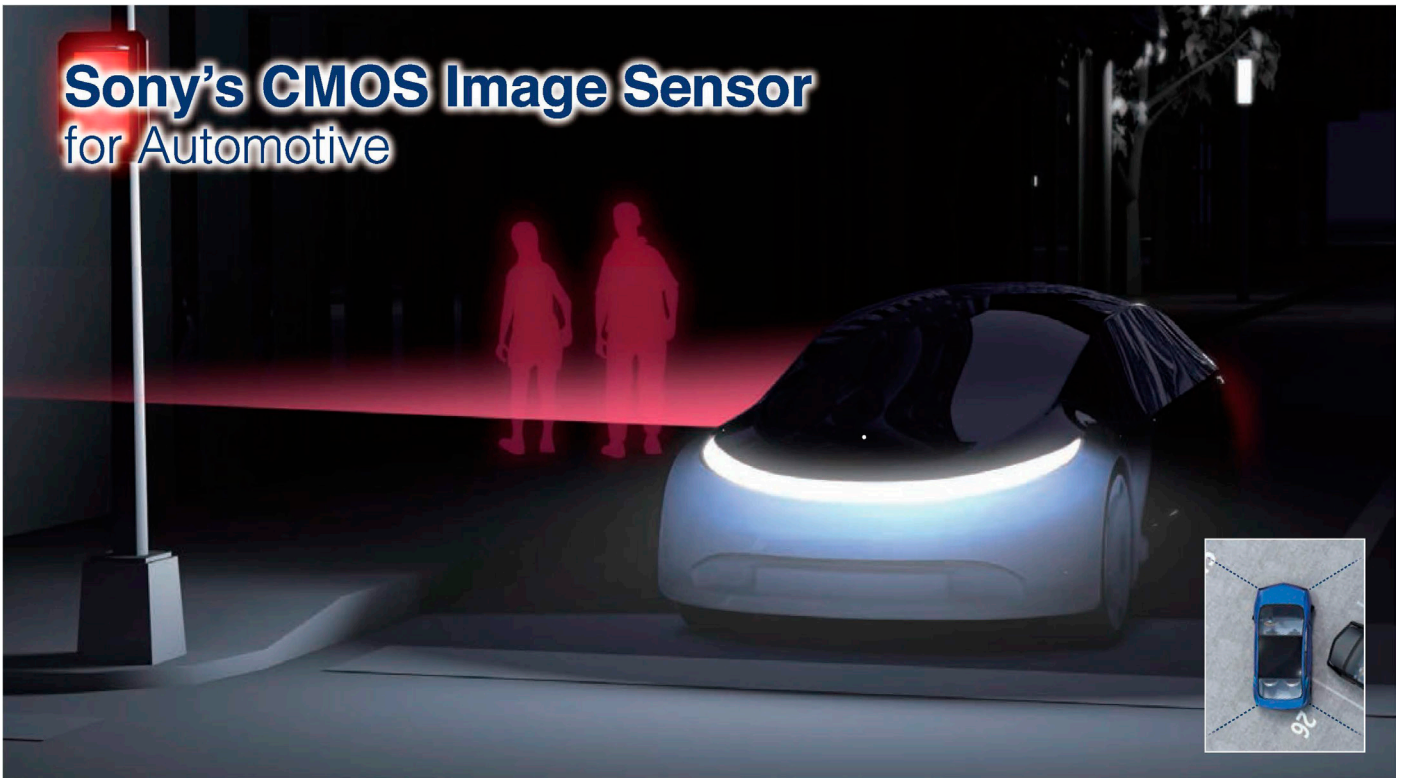
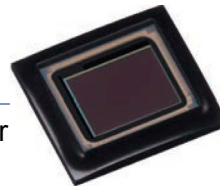


Sony's CMOS Image Sensor for Automotive



ISX019

1/3.8 type 1.23megapixels CMOS image sensor
System-on-Chip



The ISX019 is a System on Chip with the stacked structure consists of a high performance image sensor and a processing engine for automotive surround and rear view camera use.

1. The image sensor uses a back-illuminated pixel technology to realize high sensitivity and low noise, and the logic chip realizes large-scale circuit by state-of-the-art process in smaller chip with low power consumption.
2. High Dynamic Range (HDR) function is realized by digital overlap method of combining multiple frames on chip.
3. "Super Contrast" is one of the built-in function, which enhances the contrast of picture.

Product Features

- Sensitivity 4x improvement than conventional product.
- Conversion Gain Switching (HCG mode / LCG mode)
- Power consumption 40% reduction than conventional product
- High Dynamic Range (HDR) function
 - 100dB@60fps by 2-frame combination
 - 120dB@30fps by 3-frame combination.
- Super Contrast function
- AE/AWB control function
- External communication interface: I2C
- Output interface:
 - CMOS Parallel / MIPI CSI-2 Serial
- Output format : YCbCr format
- 12-bit / 10-bit A/D converter
- Serial-NOR-Flash control function
- AEC-Q100 Grade 2 qualified

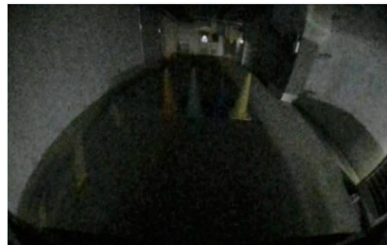
Product Specifications

Model name		ISX019
Number of recommended recording pixels		1280 (H) X 960 (V) approx. 1.23M pixels
Image size		Diagonal 4.69mm (type 1/3.8)
Unit cell size		2.9μm (H) X 2.9μm (V)
Frame rate	QVGA	60fps, 50fps, 30fps, 25fps
	V480	60fps, 50fps, 30fps, 25fps
Scaling Output mode		VGA, WVGA, XGA, HD720, WXGA, Quad-VGA
Sensitivity (Standard value@ Lens F5.6, 1/30 second exposure time)		7.7V/lux • sec (HCG mode, green pixel)
Power supply	Analog	2.9V
	Digital	1.1V
	Interface	1.8V
Power consumption		250mW (DOL3F@30fps)
Interface		- CMOS parallel output (8-bit Multiplex) - MIPI CSI-2 serial data output (4-lane / 2-lane)
Package		72pin BGA
Package size		6.65mm X 7.3mm

Image under low light



ISX019



Conventional Product

ISX019 can recognize color information of traffic cone on far side of the parking lot.

Block Diagram

